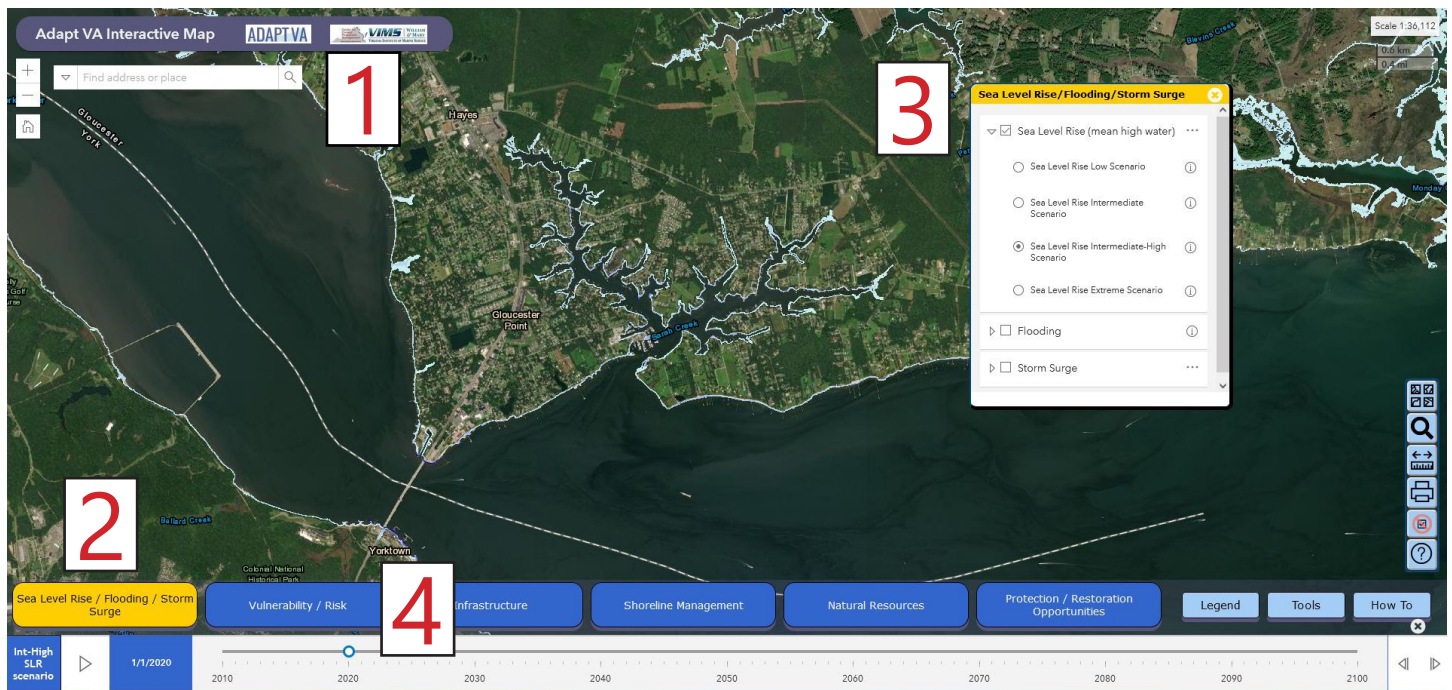
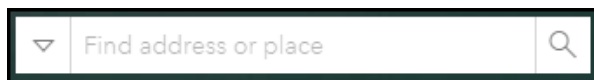


Check the expected change in sea-level rise near you:

Go to **AdaptVA Sea-Level-Rise Viewer** (http://cmap2.vims.edu/AdaptVA/adaptVA_viewer.html)



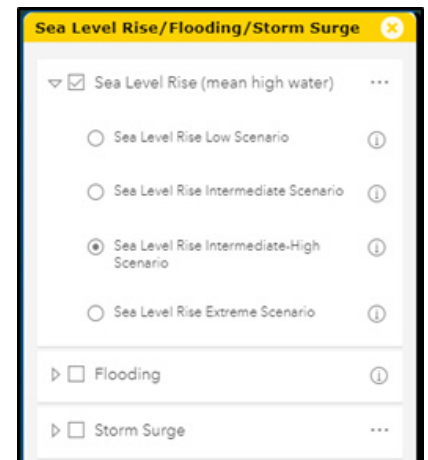
1. Put your address in the white box at the top left of the map.



2. Click on the "Sea Level Rise/Flooding/Storm Surge" button at the lower left bottom of the map.



3. Check the box next to "Sea Level Rise (mean high water)" and click on the arrow to select different scenarios ranging from Low to Extreme sea level rise projections.



4. On the very bottom of the map is a time slider, drag the blue circle forward in time to see the predicted sea level change. Extreme high tides and storm surge flooding can extend further inland from typical high water level.

