

# The Climate Corner

## Skates and Rays: Habitat Destruction

Seagrass beds form important habitats for skates and rays in the Chesapeake Bay! Because of climate change however, these beds are in danger of disappearing, which will leave many species without shelter. In this activity, we'll be discovering how seagrasses help protect skates and rays from predators and thinking about what might happen if the grass disappears.

### Instructions

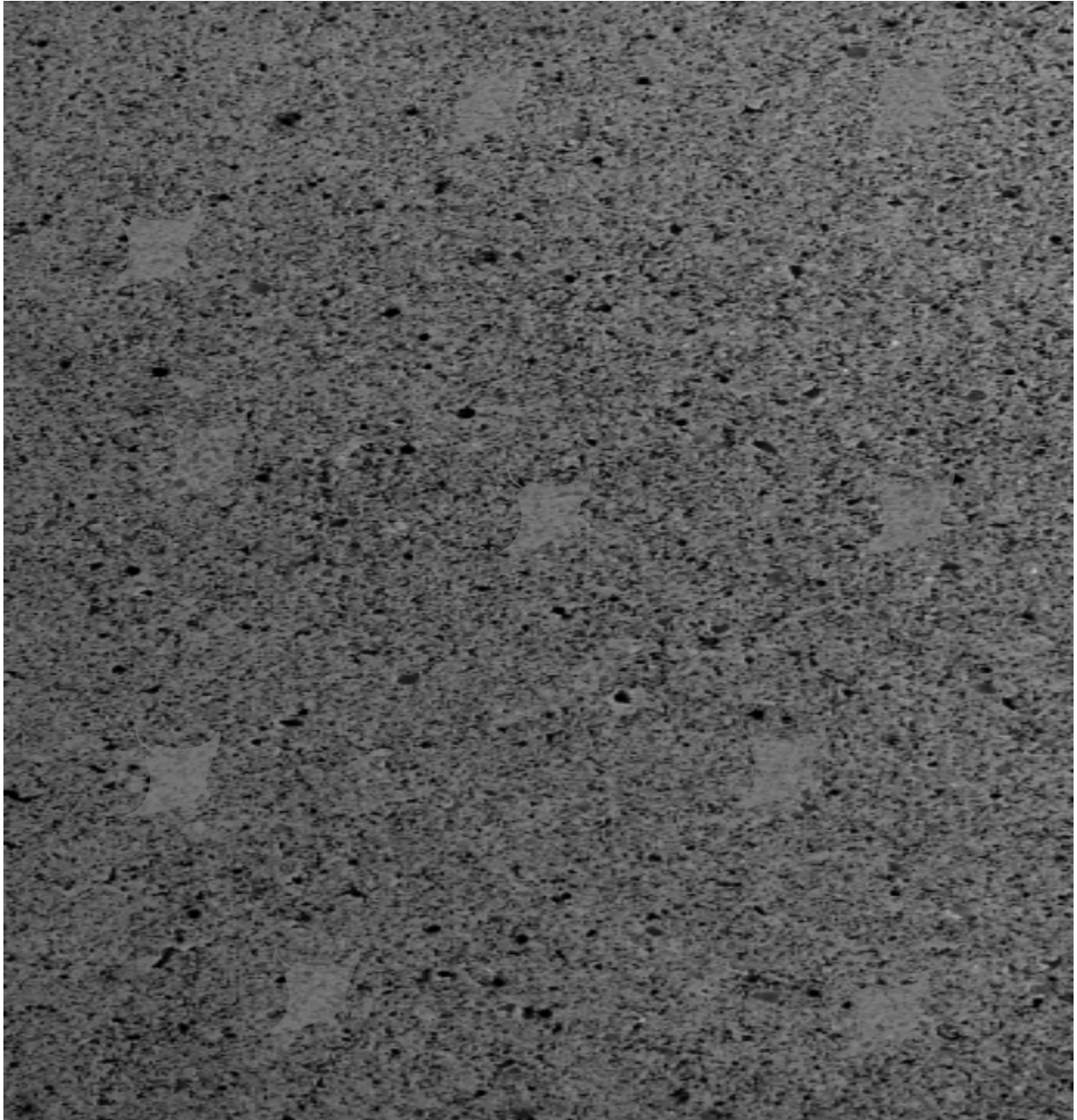
On the following 3 pages there are 3 squares. Print a set for each participant. Give everyone a writing utensil. Place your papers face down in numerical order on a table or other flat surface. When everything is set up, have everyone flip over the first paper and take 15 seconds to find as many rays as possible within the square. Repeat this step for the next 2 pages. Go back and count up the number of rays you found inside each square. Think about and discuss your results!

### Guiding Questions

1. Which box did you find the most rays in? The least? Why do you think that is?
2. Line the boxes up in order from least to most 'seagrass'. Why did you order them that way?
3. What happens to the rays when there is less 'seagrass'? Are they easier or harder to find?
4. What might happen if rays were easier to find?
5. What other benefits do you think seagrass could give to skates and rays? What about other organisms?

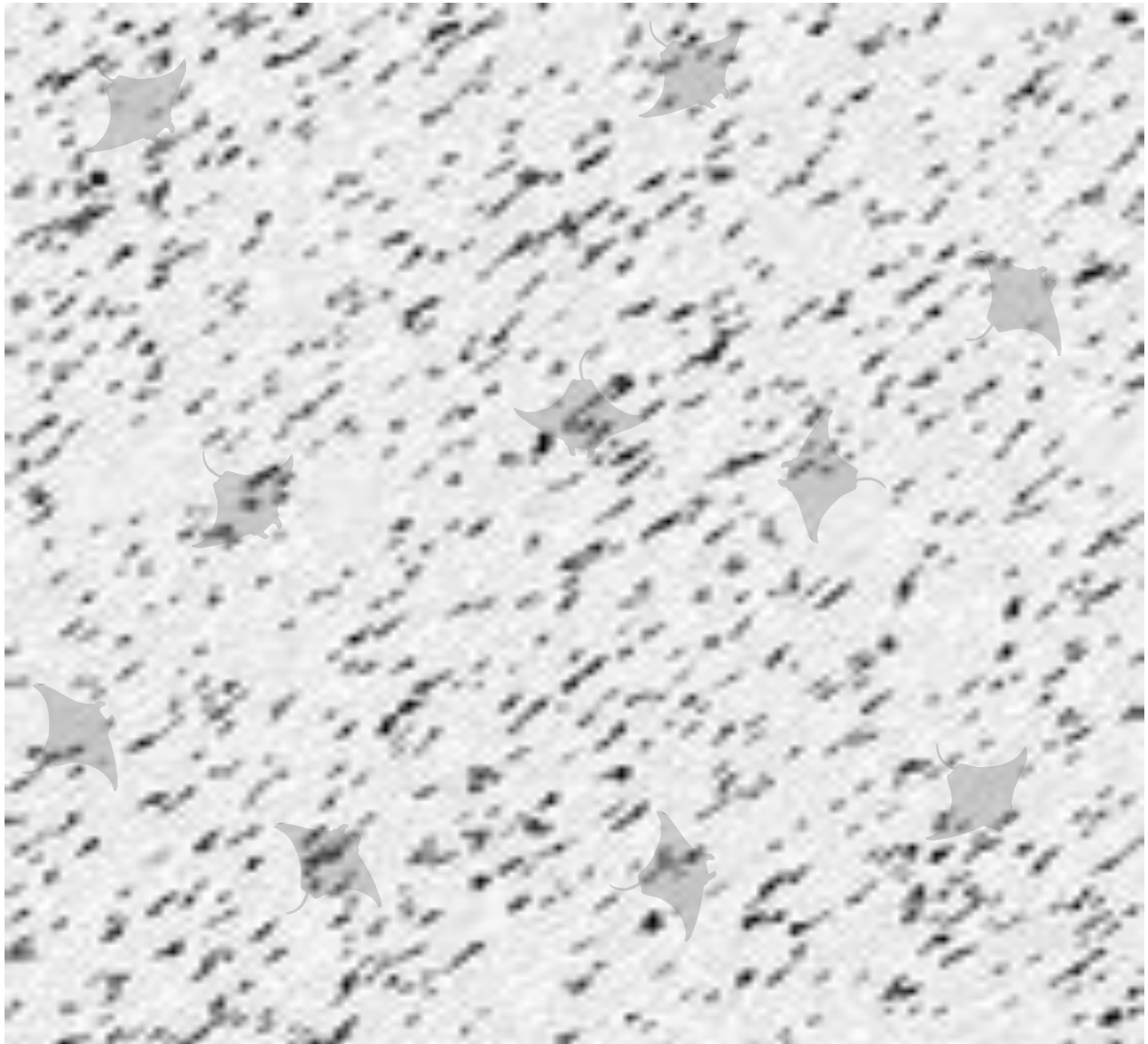
1.

How many did you find? \_\_\_\_\_



2.

How many did you find? \_\_\_\_\_



3.

How many did you find? \_\_\_\_\_

