

Installing FEED

- After downloading the installation (.msi) file you can either **run it directly from your browser or save it first to any folder on your computer** and double-click on it to begin the installation procedure. If you happen to have a previous version of FEED on your computer be sure to use Windows Control Panel to uninstall the older version before you install the downloaded one.
- Just click through any pop-up windows that may appear and allow FEED to install. It should only take a few seconds. It should not be necessary to reboot after the program installs.
- By default, FEED will install in the folder **c:\vims\feed**. Installing to this location allows FEED to work best.

For any questions regarding FEED please contact Chris Bonzek (cfb@vims.edu) at the VIMS Department of Fisheries Science.

Opening FEED Applications

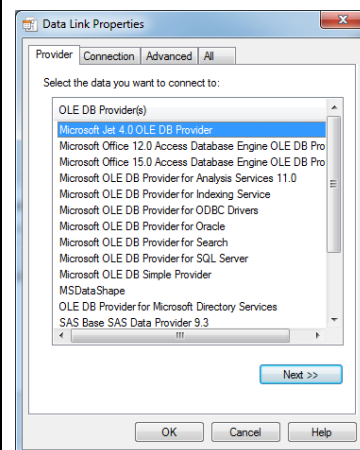
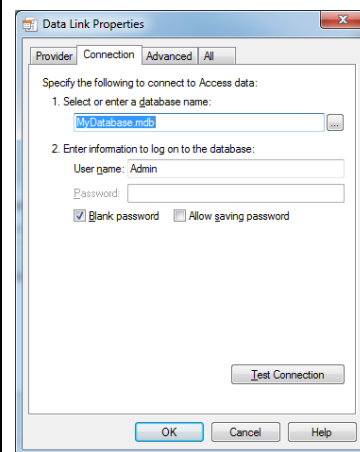
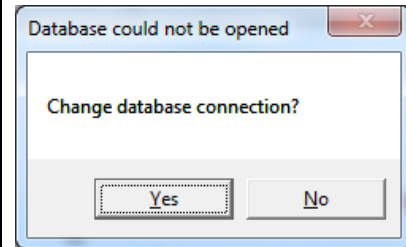
- The easiest way to open FEED applications is to **double-click on the '.feed' file**. This is a clear-text file which tells FEED how to connect with the correct Access data base and how to present the data entry screens to users. Depending upon the complexity of any particular FEED application, some .feed files are relatively small and some can be quite large with many intricate instructions to the program.
- Most of the demo applications are located in the folder **c:\vims\feed\demos**. There will be several Access data bases and several .feed files in this same folder. Each .feed file contains instructions so that it connects to the appropriate Access data base. These applications are defined such that if you copy both the .feed file and its associated Access file to any single folder on your computer the application will still open correctly. This means you can make copies to experiment with on your own.

On each computer, one application can be installed such that it will open by clicking 'Start... Programs... VIMS FEED... VIMS FEED'. This application (.feed file) must be located in the c:\vims\feed folder. The .feed file must be named 'default.feed'. The associated Access data base may be located in the same folder or may reside elsewhere, as defined within the .feed file.

Application Opening Hiccups!@*\$&@*(

- MS Access data bases currently come in two flavors, those that have a .mdb suffix (Access version 2003) and those that have a .accdb suffix (Access 2007 and later).
- On most computers, FEED applications which connect to .mdb data bases open without any user intervention. Data bases with the .accdb suffix can be more unpredictable. However, .accdb style data bases contain powerful features which can greatly add to the error-trapping (and other) capabilities of a FEED application.
- If, when you attempt to open one of the demo FEED applications and you get the pop-up message as shown to the right, the following steps should get you going:

1. Click 'Yes' to the question.
2. This will cause this window to appear.
3. Click on the 'Provider' tab at the top and you'll see something very similar to this screen.
4. **A:** If you don't see the line that reads "Microsoft Office 12.0 Access Database Engine OLE DB..." then cancel out of all windows, download and install the Microsoft Access 2007 Runtime available here: <http://www.microsoft.com/en-us/download/details.aspx?id=4438>. Then start over and pick up again at 4B.
B: Click on the line which reads "Microsoft Office 12.0 Access Database Engine OLE DB...".
C: Click 'Next >>' and you will see this screen.



D: In the 'Data Source' box type the name of the appropriate Access data base, including the .accdb suffix. For example, type mysurvey.accdb . Unfortunately Windows does not offer the ability to browse to the data base. You must know its name, and if it is located elsewhere on your computer you must know the entire path (e.g. c:\mydata\mysurvey.accdb).

E: Click 'Test Connection' and hopefully it will tell you that everything is A-OK.

F: This procedure is normally only necessary the first time you open a FEED application.

G: If this procedure isn't successful please contact us as at the top of this page. Depending upon your exact version of MS Office and its installed components the exact nature of your problem and its solution may differ somewhat.

