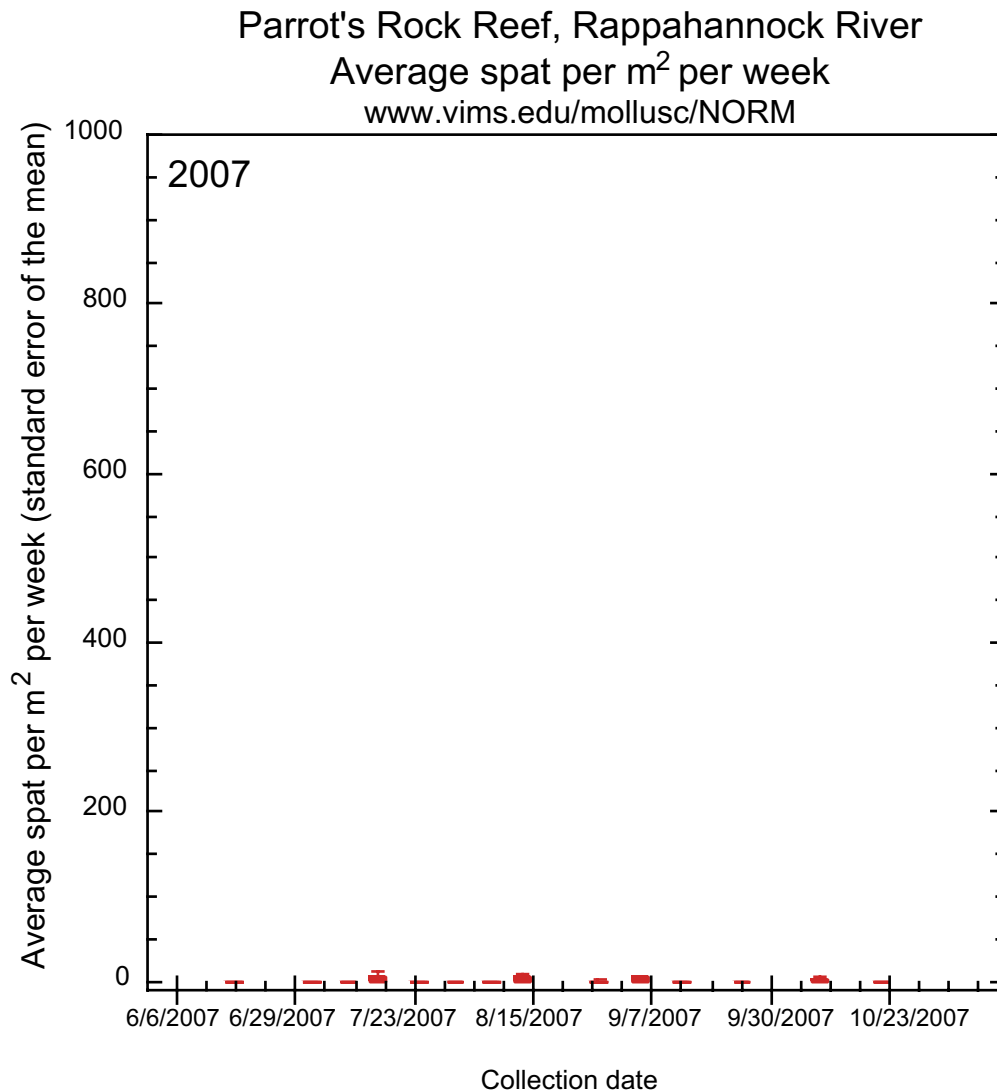


Speaker's Notes: Parrot's Rock Reef, Rappahannock River - Recruit Abundance
Contact Mr. P.G. Ross (pg@vims.edu) for additional information or questions regarding these data.



Settlement collectors consisting of arrays of ceramic tiles were deployed within 10 m of reef surfaces throughout the season. Oyster spat settling on tiles were examined under a microscope in the laboratory. This technique is used to give an index of actual settlement on the reef surface.

Minor settlement was observed for 2007 relative to patterns from 2004-2006. Slightly higher settlements rates over a long period were seen. Similar trends were observed to varying degrees at most reefs being monitored.