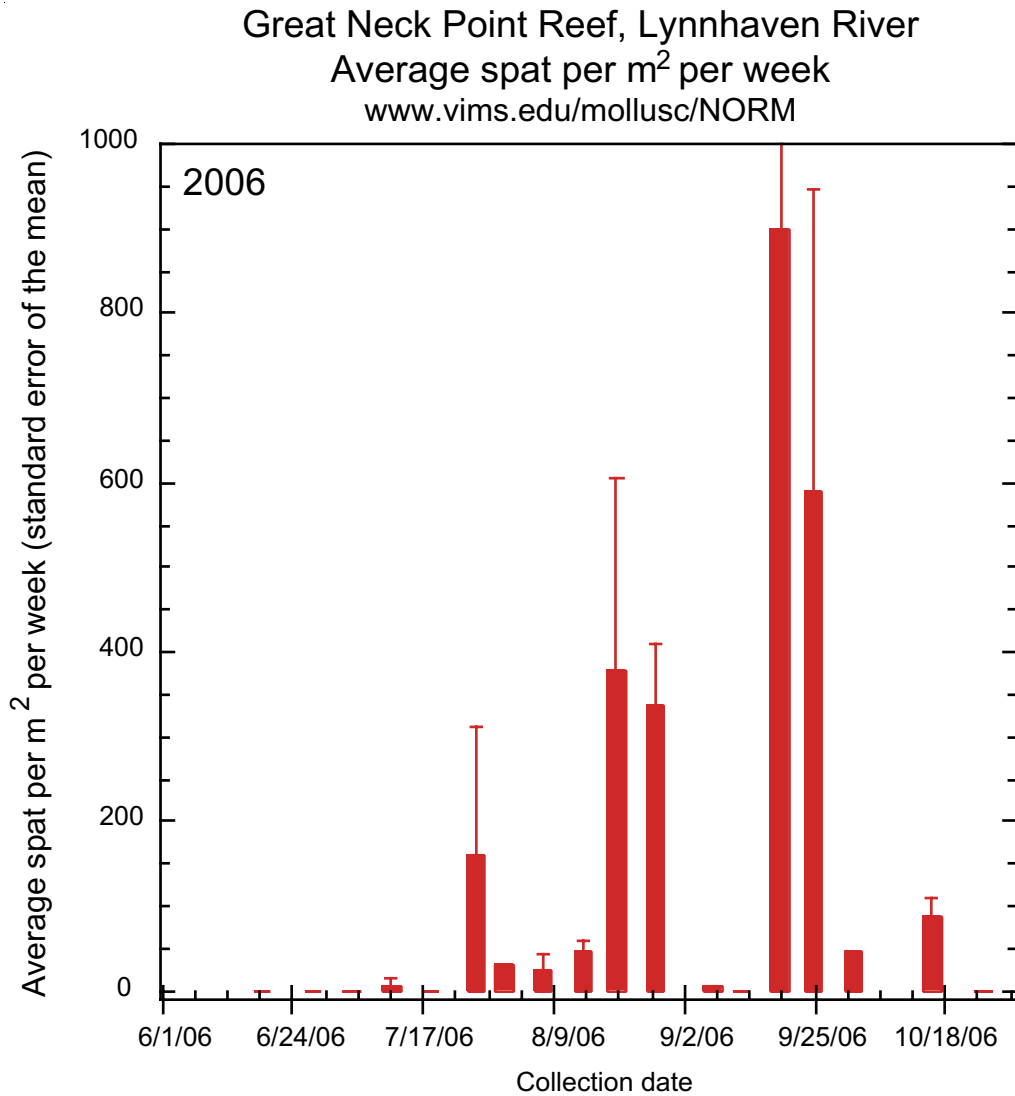


Speaker's Notes: Great Neck Point Reef, Lynnhaven River - Recruit Abundance
Contact Mr. P.G. Ross (pg@vims.edu) for additional information or questions regarding these data.



Settlement collectors consisting of arrays of ceramic tiles were deployed within 10 m of reef surfaces throughout the season. Oyster spat settling on tiles were examined under a microscope in the laboratory. This technique is used to give an index of actual settlement on the reef surface.

Although settlement began a bit later than expected, the intensity was much higher than in the other river systems currently being monitored. Additionally, settlement continued over a substantial period from late August into early October. Continued monitoring over the next several years should provide a much better picture of this metric.