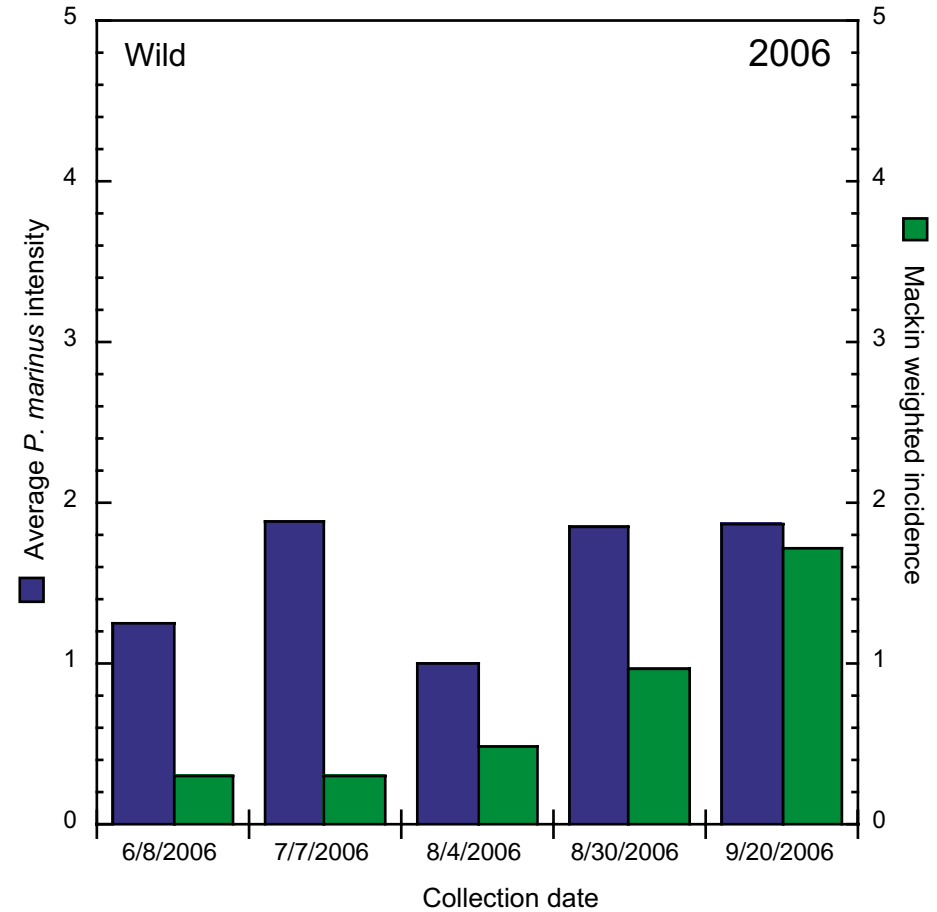
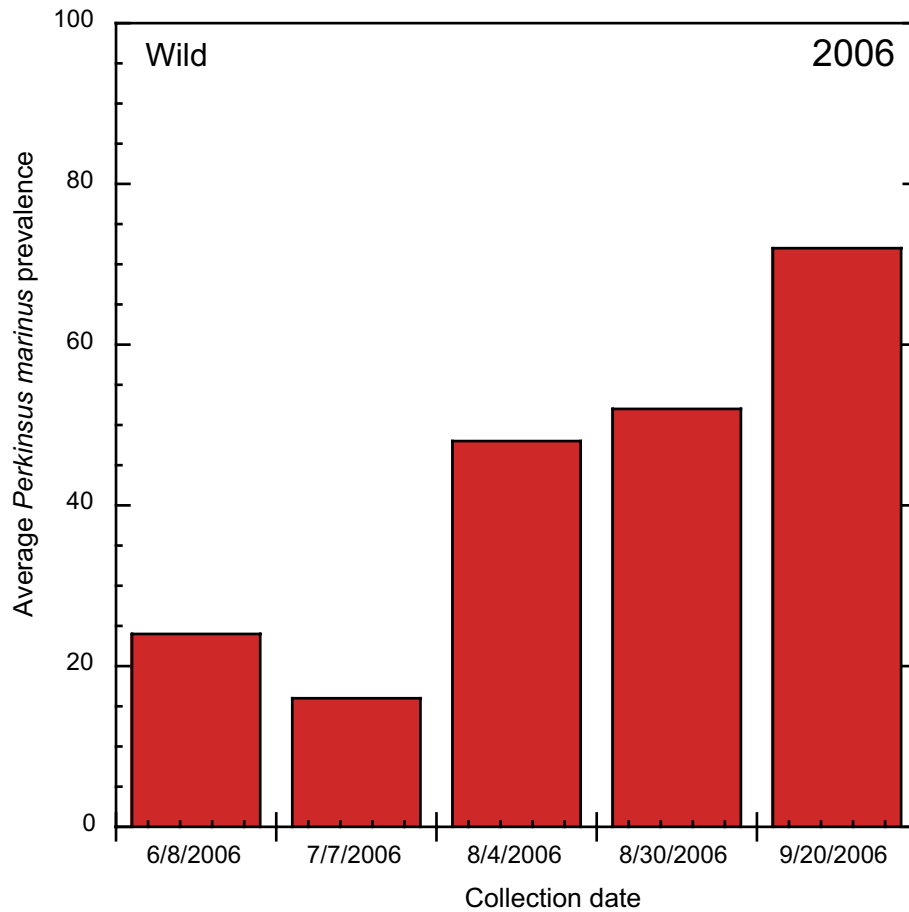


Speaker's Notes: Crane's Creek Reef, Great Wicomico River: *P. marinus* (Dermo) prevalence and intensity.
 Contact Dr. Ryan Carnegie (carnegie@vims.edu) for additional information or questions regarding these data.

Crane's Creek Reef, Great Wicomico River
P. marinus (Dermo) prevalence in *C. virginica*
www.vims.edu/mollusc/NORM

Crane's Creek Reef, Great Wicomico River
P. marinus (Dermo) intensity in *C. virginica*
www.vims.edu/mollusc/NORM



Perkinsus marinus (Dermo) prevalence, weighted incidence, and average intensity data for Crane's Creek Reef in 2006 illustrate a typical seasonal Dermo outbreak. The parasite was present at low levels in June but increased in prevalence and infection intensity as water temperatures warmed. Dermo prevalence peaked at 72% in September. Average intensities reached 1.9 (scale 0.5-5.0, with infections scored as 0.5 = "rare", 1 = "light", 3 = "moderate", or 5 = "heavy"), a light-moderate infection, on average. Weighted incidences reached 1.7 (scale 0.0-5.0, with scoring as above), an indication that moderate Dermo disease-caused mortality was occurring.