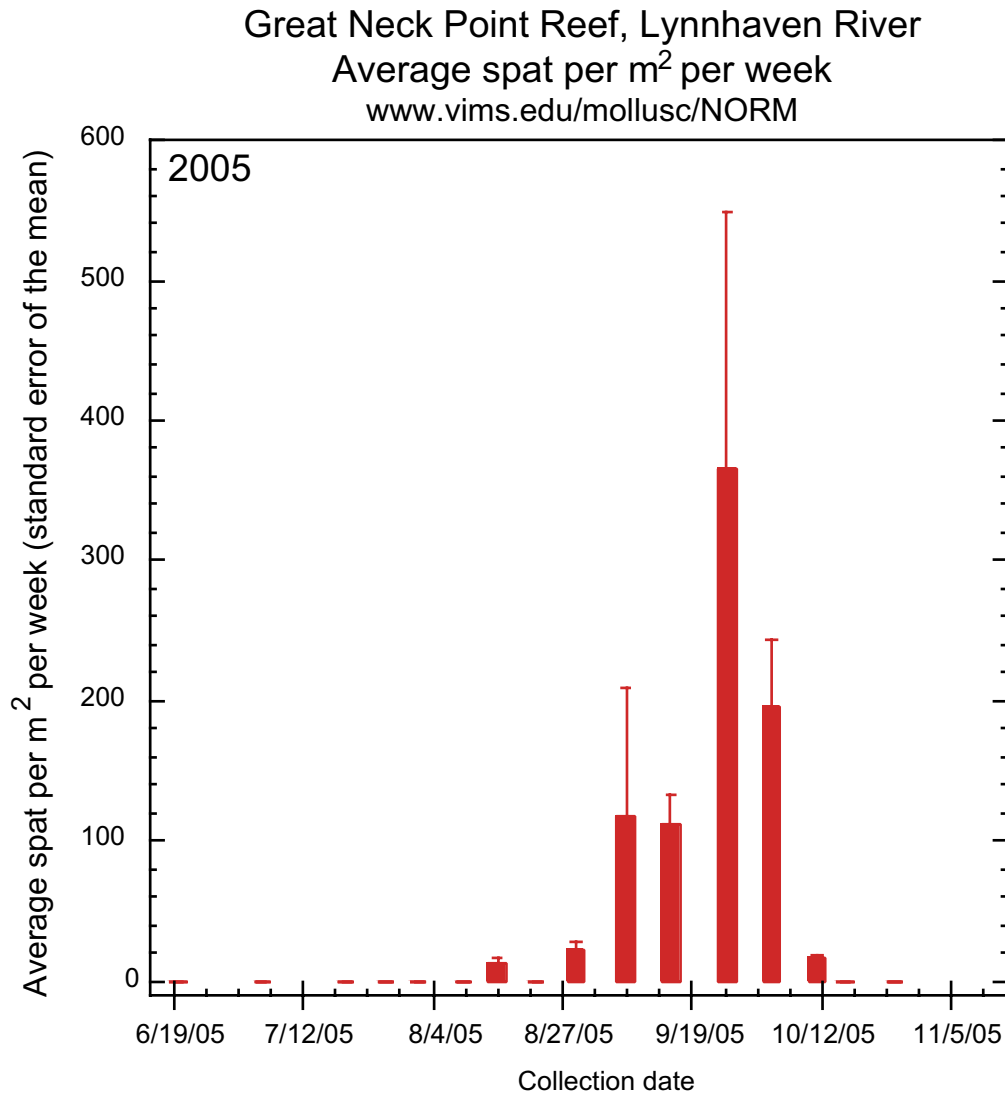


Speaker's Notes: Great Neck Point Reef, Lynnhaven River - Recruit Abundance
Contact Mr. P.G. Ross (pg@vims.edu) for additional information or questions regarding these data.



Settlement collectors consisting of arrays of ceramic tiles were deployed within 10 cm of reef surfaces throughout the season. Oyster spat settling on tiles were examined under a microscope in the laboratory. This technique is used to give an index of actual settlement on the reef surface.

Although settlement began a bit later than expected, the intensity was much higher than in the other river systems currently being monitored. Additionally, settlement continued over a substantial period from late August into early October. Continued monitoring over the next several years should provide a much better picture of this metric.