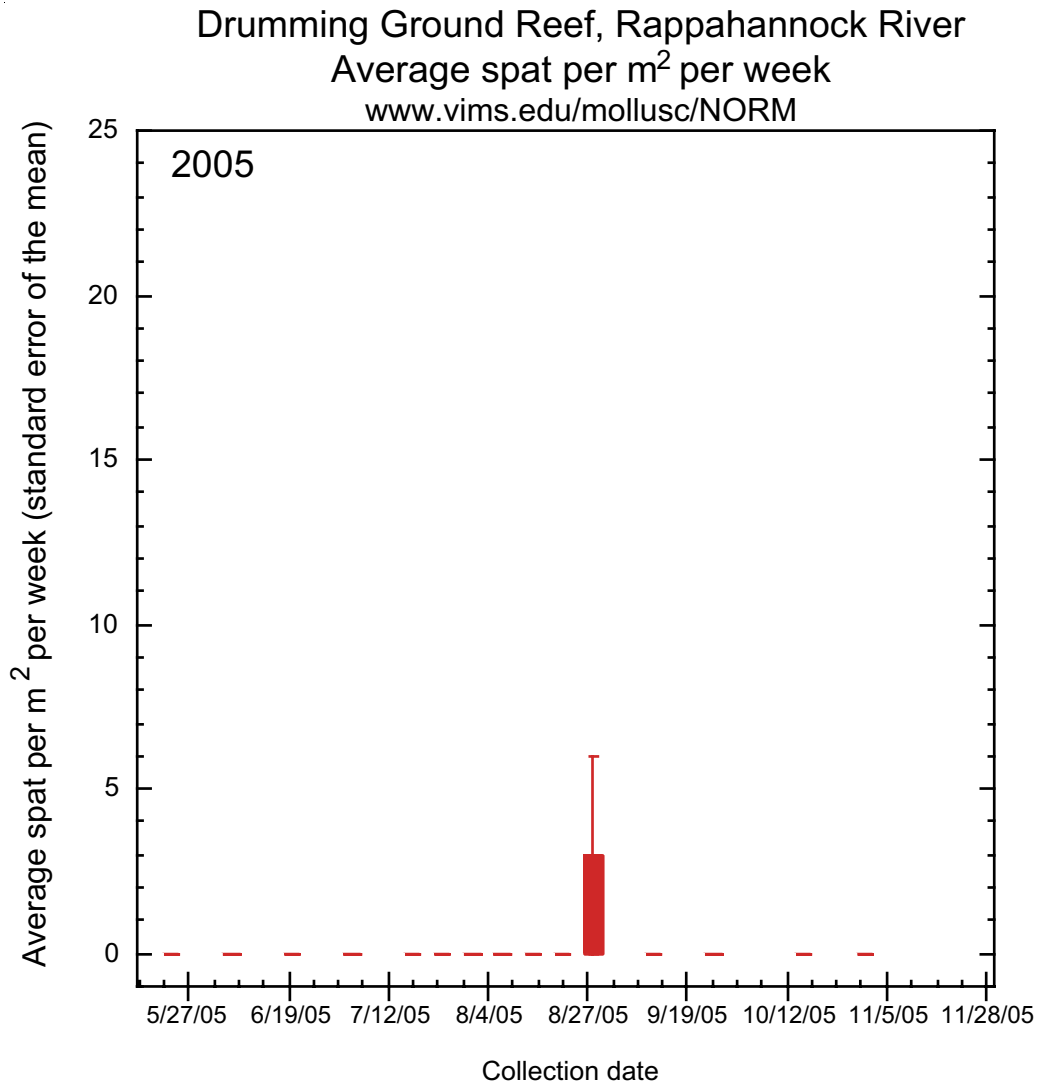


Speaker's Notes: Drumming Ground Reef, Rappahannock River - Recruit Abundance
Contact Mr. P.G. Ross (pg@vims.edu) for additional information or questions regarding these data.



Settlement collectors consisting of arrays of ceramic tiles were deployed within 10 cm of reef surfaces throughout the season. Oyster spat settling on tiles were examined under a microscope in the laboratory. This technique is used to give an index of actual settlement on the reef surface.

Very little settlement was observed for 2005. This follows a pattern from 2004 and is attributed to cool spring water temperatures combined with several heavy rains in early fall. Oysters typically spawn much less under such conditions. Continued monitoring over the next several years should provide a much better picture of this metric.